

Creed Speaking CDE

(rev. Oct. 2023)

Purpose

The FFA Creed outlines the organization's beliefs regarding the industry of agriculture, FFA membership and the value of citizenship and patriotism. The Creed is recited by FFA Members as a part of the requirements to earn the Greenhand FFA Degree. The purpose of the Creed Speaking CDE is to develop the public speaking abilities of 7th, 8th, and 9th grade FFA Members as well as develop their self-confidence and contribute to their advancement in the FFA degree program.

Eligibility

The participant must be an active member of a chartered Delaware FFA Chapter and enrolled in grades 7, 8, or 9.

Event Procedures

The Creed Speaking CDE is limited to two (2) participants per chapter for the preliminaries; participants must qualify in grades 7, 8, and 9.

- A. No ranking will be provided for the preliminaries, but the top 8 individual placings will be announced at State Convention. The state winner will compete at the next national convention following their state qualifying round.
- B. Participants must be in FFA Official Dress for this event.
- C. Three to eight competent and impartial persons will be selected to judge the event. At least one judge should have an agricultural/FFA background.
- D. Participants will not be allowed to possess any personal electronic devices (i.e. cell phones, smart watches, air pods, etc) other than those approved by event officials. Participants who possess personal electronic devices without prior approval of the event officials will be disqualified from the event.
- E. No advisor of a competing student may be present in the room during an LDE presentation.

Event Format

- A. Members will present the Creed from the current year's Official FFA Manual.
- B. Each participant must recite the Creed from memory. Each participant shall begin the presentation by stating, "The FFA Creed by E.M. Tiffany." Each CDE participant should end the presentation with the statement, "...that inspiring task. Thank you." Additional or missed introductory and concluding remarks will result in accuracy deductions of 2 points per word as indicated as determined by the accuracy judge.
- C. The event will include an oral presentation and answering 3 critical thinking questions per round directly related to the Creed, judges will stop the students at the 5 minute mark to conclude the questioning round. There will be no time deductions for the questioning round or points deducted for unanswered questions. The questions will be formulated annually and will avoid two part questions. Sample questions will be available prior to the event.

D. The event will be a timed activity with four minutes to state the creed. After four minutes, the participant will be deducted 1 point for every second over set time.

- E. Event officials will randomly determine the speaking order. No props are to be used. Applause shall be withheld until all participants have spoken.
- F. At the time of the event, the judges will score each participant on the delivery of the creed, using the score sheet provided.
- G. Timekeepers shall be designated to record the time used by each participant in delivering his/her speech.
- H. **Accuracy** judges will record the number of recitation errors during delivery. For every word stated in the creed that is incorrect/ added, there will be a 2 point Deduction, as determined by the accuracy judge.
- I. When participants have finished speaking, each judge will total the score of each speaker to determine final ratings of participants.
- J. Negative scores during preliminaries cannot advance to the next round at state convention.
- K. Timekeepers will be designated to record the time used by each participant in delivering his/her speech. Content accuracy judges will record the number of recitation errors during delivery.
- L. When participants have finished the presentation and answering of questions, each judge will total the score of each speaker. The timekeepers' and accuracy judges' records will be used in computing the final score for rankings of participants.

Scoring

Scoring is completed using the score sheet provided in the Creed Speaking LDE Presentation Rubric.

The top 2 scores from each room will advance to State Convention from the preliminary contest and then the next highest 3 scores regardless of room will advance to state convention (up to 9 in total).

Tiebreakers

Ties will be broken using the following procedure, unless otherwise noted by the CDE Chair:

1. Ties will be broken based on the greatest number of low ranks. Participant's low ranks will be counted and the participant with the greatest number of low ranks will be declared the winner. If a tie still exists, then the event superintendent will rank the participant's response to questions.
2. If a tie still exists, then the participant's raw scores will be totaled. The participant with the greatest total of raw points will be declared the winner.

Awards

Awards will be presented during a session at the Delaware FFA State Convention. The first place winner will receive a plaque, pin, and possible sponsorship (dependent on funding) to Big E and National FFA Convention through Delaware FFA Foundation sponsor:

Delaware Association of Agriscience Educators

References

This list of references is not intended to be all-inclusive. The following list contains references that may prove helpful:

Current year's Official FFA Manual www.ffa.org

National FFA Core Catalog—Figures of Speech DVD

Sample FFA Creed Questions

1. How can you as a FFA Member exert a positive influence in your home and community?
2. Why do you believe in the future of Agriculture?
3. How would you use the leadership gained as a FFA Member to serve other aspects of your life?
4. What are you doing as a FFA Member to exert influence in your community?
5. What agricultural pursuits do you see as the most exciting?
6. Name one achievement won by the present and past generations of agriculturalists.
7. At the end of the first paragraph, the Creed states that, "in the promise of better days through better ways, even as the better things we now enjoy have come to us from the struggles of former years." What would be some examples of struggles of former years that the Creed is referring to?
8. What do you believe is the future of American agriculture?
9. What discouragements may someone face in the pursuit of a life dedicated to agriculture?
10. How can living and working on a farm be challenging?
11. How would you define a "progressive agriculturalist"?
12. What are some traditions of our national life as they relate to agriculture?
13. What reasons are there for believing in the future of agriculture?
14. What is meant by the statement, "With a faith born not of words, but of deeds?"
15. How can we have "better days through better ways?"
16. What do you believe the future of agriculture holds for you?
17. What are some of the important "achievements won by the present and past generations of agriculturists"?
18. What are some of the "better things we now enjoy that have come to us from the struggle of former years"?
19. What is meant by engaged in iother agricultural pursuits"?
20. What is challenging about "living and working on a good farm"?
21. What do you believe constitutes a good farm?
22. What are some of the "discomforts of agricultural life"?
23. What are some of the discouragements that often are associated with agricultural life?
24. What are some of the "joys of agricultural life"?
25. What is meant by the statement "and hold an inborn fondness for those associations which, even in hours of discouragement, I cannot deny?"
26. Why is leadership so important?
27. What can you do as a freshman in agricultural education to develop leadership skills?
28. What can you do to merit "respect from others"?
29. What can you do to make your work more efficient?
30. What can you do to develop the ability to think clearly?
31. What practices and policies are there that you think are unfair?
32. How can progressive agriculturists serve themselves and the public interest in marketing the products of their toil?
33. What is meant by the "power in bargaining"?
34. What is the difference between begging and bargaining?
35. What is meant by "the life abundant"?
36. What is meant by "honest wealth"?
37. What are some examples of wealth that are not honest?
38. What can you do to help others have an abundant life and the honest wealth to help it make it so?
39. Could one have an abundant life without wealth?
40. What is meant by "less need for charity and more of it when needed"?
41. Why is it important for each of us to be happy?
42. Why is it important to play square with thos whose happiness depends on us?
43. Whose happiness depends upon you?
44. What is meant by rural America?
45. Who wrote the FFA Creed?
46. What can you do, as a freshman in agricultural education, to exert an influence in your home and in your community, which will stand solid for your part in that inspiring task?
47. When was The Creed officially adopted by FFA?

THE FFA CREED SPEAKER SCRIPT

THE FOLLOWING IS EXACTLY WHAT MUST BE RECITED:

"The FFA Creed by E.M. Tiffany

I believe in the future of agriculture, with a faith born not of words but of deeds – achievements won by the present and past generations of agriculturists; in the promise of better days through better ways, even as the better things we now enjoy have come to us from the struggles of former years.

I believe that to live and work on a good farm, or to be engaged in other agricultural pursuits, is pleasant as well as challenging; for I know the joys and discomforts of agricultural life and hold an inborn fondness for those associations which, even in hours of discouragement, I cannot deny.

I believe in leadership from ourselves and respect from others. I believe in my own ability to work efficiently and think clearly, with such knowledge and skill as I can secure, and in the ability of progressive agriculturists to serve our own and the public interest in producing and marketing the product of our toil.

I believe in less dependence on begging and more power in bargaining; in the life abundant and enough honest wealth to help make it so – for others as well as myself; in less need for charity and more of it when needed; in being happy myself and playing square with those whose happiness depends upon me.

I believe that American agriculture can and will hold true to the best traditions of our national life and that I can exert an influence in my home and community which will stand solid for my part in that inspiring task.

ALL RECITATION ERRORS (*MISSED WORDS*) MUST BE CIRCLED

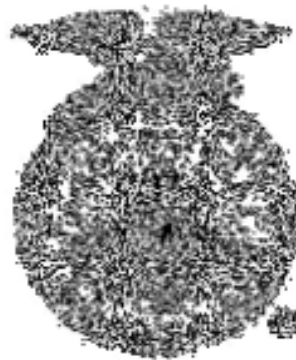
Total # of Recitation Errors
(*missed, added or switched words*)

Question Time:

Determination of Deductions

Number of errors ___ x 2 = _____

Total Deduction:



The creed was written by E.M. Tiffany, and adopted at the 3rd National Convention of the FFA. It was revised at the 38th Convention and the 63rd Convention.

Creed Speaking LDE Presentation Rubric

100 POINTS

Participant # _____

Indicators	Very strong evidence of skill 5-4 points	Moderate evidence of skill 3-2 points	Weak evidence of skill 1-0 points	Points Earned	Weight	Total Points
Oral Communication – 30 points						
Pace	Speaks very articulately at rate that engages audience.	Speaks articulately but occasionally speaks too fast or has long unnecessary hesitations	Speaks too slow or too fast to engage audience		X 2	
Tone	Voice is upbeat, impassioned and under control	Voice is somewhat upbeat, impassioned and under control	Voice is not upbeat; lacks passion and control		X 2	
Volume	Emitted a clear, audible voice for the audience present	Emitted a somewhat clear, audible voice for the audience present	Emitted a barely audible voice for the audience present		X 2	
Non-verbal Communication – 30 points						
Eye contact	Eye contact constantly used as an effective connection Constantly looks at the entire audience (90-100 percent of the time)	Eye contact is mostly effective and consistent Mostly looks around the audience (60-80 percent of the time)	Eye contact does not always allow connection with the speaker Occasionally looks at someone or some groups (less than 50 percent of the time)		X 2	
Mannerisms and gestures	Hand motions are expressive and used to emphasize talking points No nervous habits	Sometimes exhibits nervous habits Hands are sometimes used to express or emphasize	Displays some nervous habits Hands are not used to emphasize talking points; hand motions are sometimes distracting		X 2	

Indicators	Very strong evidence of skill 5–4 points	Moderate evidence of skill 3–2 points	Weak evidence of skill 1–0 points	Points Earned	Weight	Total Points
Poise	Portrays confidence and composure through appropriate body language (stance, posture, facial expressions)	Maintains control most of the time; rarely loses composure	Lacks confidence and composure		X 2	
Question and Answer—40 points						
Response to questions	Responds with organized thoughts and concise answers	Speaks effectively and sometimes gets off topic Answers lacks organization	Response fails to answer question		X 2	
Support	Always provides details that support answers/basis of the question	Usually provides details that are supportive of the answers/basis of the question	Sometimes overlooks details that could be very beneficial to the answers/basis of the question		X 3	
Knowledge of agriculture	Answer shows knowledge of agriculture	Answer shows limited knowledge of agriculture	Answer shows no knowledge of agriculture		X 3	
<i>Gross Total Points</i>						
Time Deduction*						
Accuracy Deduction**						
NET TOTAL POINTS						
RANK						

* -1 point per second over, determined by the timekeepers

** - 2 points per word, determined by the accuracy judges