

Spanish FFA Creed Speaking LDE

Purpose

The Spanish Creed Speaking Leadership Development Event provides 7th, 8th and 9th grade FFA members the opportunity to present the five legendary paragraphs of the FFA Creed in Spanish. Students are evaluated based on presentation, accuracy and response to questions.

Eligibility

This event is open to active FFA members who are enrolled in Agricultural Education as a 7th, 8th, or 9th grader. For Convention purposes, students may not enter either the Creed Speaking LDE and the Spanish FFA Creed Speaking LDE in the same year at the state level. Only 2 participants per Chapter are allowed to compete in the 7th to 9th grade division. An exhibition for 10-12th graders will also be offered (2 students per school will be allowed to compete- this is an exhibition, only the top 5 participants at preliminaries will advance to state convention). 10-12 grade is exhibition only and will not advance to National Convention.

The use or possession of cellular phones or any other electronic communication device is prohibited during any state-level leadership development event. Any violation of this rule will result in disqualification.

Dress Code

Participants are required to follow the Delaware FFA Career Development Event Dress code. Official dress for an FFA member includes: an official FFA jacket zipped to the top, black slacks or skirt, black socks/nylons, white collared shirt, official FFA tie or scarf and black dress shoes with closed heel or toe.

Procedures for Administering the Event

- A. Participants must recite from memory the latest version of the FFA Creed in proper Spanish.
- B. Each participant shall begin the presentation by stating, "The FFA Creed by E.M. Tiffany". Each LDE participant should end the presentation with the statement "...that inspiring task. Thank you". Additional or missed introductory and concluding remarks will result in accuracy deductions of 2 points per word as indicated as determined by the accuracy judge.
- C. The event will include an oral presentation and answering 3 critical thinking questions in Spanish. The students will have 5 minutes to respond to the

questions in Spanish. There will be no time deductions for the questioning round or points deducted for unanswered questions.

- D. The event will be timed actively with 4 minutes to state the creed. After 4 minutes, the participant will be deducted 1 point for every second over time.
- E. Event officials will randomly determine the speaking order. No props are to be used.
- F. At the time of the event, the judges will score each participant on the delivery of the creed using the score sheet provided.
- G. Accuracy judges will record the number of recitation errors during delivery. For every word states in the creed that is incorrect/added, there will be a 2 point deduction as determined by the accuracy judge.
- H. When participants have finished speaking, each judge will total the score of each speaker to determine final ratings of participants.
- I. No Ranking will be provided for the preliminary round, but the top

Scoring

Scoring is completed using the score sheet provided in the Creed Speaking LDE Presentation Rubric. The top 8 scores from the room will advance to State Convention.

Tiebreakers

Ties will be broken using the following procedures.

1. Greatest number of low ranks. Participants with low ranks will be counted and the participant with the greatest number of low ranks will be declared the winner. If a tie still exists, then the event superintendent will rank the participant's response to questions.
2. If a tie still exists, then the participants' raw scores will be totaled. The participant with the greatest total raw points will be declared the winner.

Awards

Awards will be presented during a session at the Delaware FFA State Convention.

Spanish Creed El Credo de FFA

Creo en el futuro de la agricultura, con una fe que no nace de las palabras sino de los hechos – logros conseguidos por las generaciones presentes y pasadas de agricultores; en la promesa de días mejores a través de mejores maneras, así como creo que las mejores cosas de las que gozamos hoy han llegado a nosotros como resultado de las luchas de años anteriores.

Creo que vivir y trabajar en una buena finca, o dedicarse a otras actividades agrícolas, es agradable, y al mismo tiempo es un reto, porque conozco las alegrías e inconvenientes de la vida agrícola y mantengo una afición innata por aquellas asociaciones que no le negaré ni siquiera en horas de desaliento.

Creo en nuestro propio liderazgo y en el respeto a los demás. Creo en mi propia capacidad de trabajar de manera eficiente y de pensar con claridad, con cuantos conocimientos y habilidades pueda adquirir, y en la capacidad de los agricultores progresistas para servir nuestros propios intereses y el interés público en la producción y la comercialización del producto de nuestro trabajo.

Creo en menos dependencia de la caridad y más poder en la negociación; en la vida abundante y en que haya suficiente riqueza honesta para ayudar a que así sea – tanto para los demás como para mí; sin necesidad de caridad y más de ella cuando sea necesario; creo en ser feliz y en ser más honesto con aquellos cuya felicidad depende de mí.

Creo que la agricultura de Estados Unidos puede y debe mantenerse fiel a las mejores tradiciones de nuestra vida nacional y que puedo ejercer influencia en mi hogar y en la comunidad, que se mantendrá firme por mi parte en esta inspiradora tarea.

Sample FFA Creed Questions

1. How can you as a FFA Member exert a positive influence in your home and community?
2. Why do you believe in the future of Agriculture?
3. How would you use the leadership gained as a FFA Member to serve other aspects of your life?
4. What are you doing as a FFA Member to exert influence in your community?
5. What agricultural pursuits do you see as the most exciting?
6. Name one achievement won by the present and past generations of agriculturalists.
7. At the end of the first paragraph, the Creed states that, "in the promise of better days through better ways, even as the better things we now enjoy have come to us from the struggles of former years." What would be some examples of struggles of former years that the Creed is referring to?
8. What do you believe is the future of American agriculture?
9. What discouragements may someone face in the pursuit of a life dedicated to agriculture?
10. How can living and working on a farm be challenging?
11. How would you define a "progressive agriculturalist"?
12. What are some traditions of our national life as they relate to agriculture?
13. What reasons are there for believing in the future of agriculture?
14. What is meant by the statement, "With a faith born not of words, but of deeds?"
15. How can we have "better days through better ways?"
16. What do you believe the future of agriculture holds for you?
17. What are some of the important "achievements won by the present and past generations of agriculturists"?
18. What are some of the "better things we now enjoy that have come to us from the struggle of former years"?
19. What is meant by engaged in other agricultural pursuits?
20. What is challenging about "living and working on a good farm"?
21. What do you believe constitutes a good farm?
22. What are some of the "discomforts of agricultural life"?
23. What are some of the discouragements that often are associated with agricultural life?
24. What are some of the "joys of agricultural life"?
25. What is meant by the statement "and hold an inborn fondness for those associations which, even in hours of discouragement, I cannot deny?"
26. Why is leadership so important?
27. What can you do as a freshman in agricultural education to develop leadership skills?
28. What can you do to merit "respect from others"?
29. What can you do to make your work more efficient?
30. What can you do to develop the ability to think clearly?
31. What practices and policies are there that you think are unfair?
32. How can progressive agriculturists serve themselves and the public interest in marketing the products of their toil?
33. What is meant by the "power in bargaining"?
34. What is the difference between begging and bargaining?
35. What is meant by "the life abundant"?
36. What is meant by "honest wealth"?
37. What are some examples of wealth that are not honest?
38. What can you do to help others have an abundant life and the honest wealth to help it make it so?
39. Could one have an abundant life without wealth?
40. What is meant by "less need for charity and more of it when needed"?
41. Why is it important for each of us to be happy?
42. Why is it important to play square with those whose happiness depends on us?
43. Whose happiness depends upon you?
44. What is meant by rural America?
45. Who wrote the FFA Creed?
46. What can you do, as a freshman in agricultural education, to exert an influence in your home and in your community, which will stand solid for your part in that inspiring task?
47. When was The Creed officially adopted by FFA?

THE FFA CREED SPEAKER SCRIPT

THE FOLLOWING IS EXACTLY WHAT MUST BE RECITED:

"The FFA Creed by E.M. Tiffany

I believe in the future of agriculture, with a faith born not of words but of deeds – achievements won by the present and past generations of agriculturists; in the promise of better days through better ways, even as the better things we now enjoy have come to us from the struggles of former years.

I believe that to live and work on a good farm, or to be engaged in other agricultural pursuits, is pleasant as well as challenging; for I know the joys and discomforts of agricultural life and hold an inborn fondness for those associations which, even in hours of discouragement, I cannot deny.

I believe in leadership from ourselves and respect from others. I believe in my own ability to work efficiently and think clearly, with such knowledge and skill as I can secure, and in the ability of progressive agriculturists to serve our own and the public interest in producing and marketing the product of our toil.

I believe in less dependence on begging and more power in bargaining; in the life abundant and enough honest wealth to help make it so – for others as well as myself; in less need for charity and more of it when needed; in being happy myself and playing square with those whose happiness depends upon me.

I believe that American agriculture can and will hold true to the best traditions of our national life and that I can exert an influence in my home and community which will stand solid for my part in that inspiring task.

ALL RECITATION ERRORS (MISSED WORDS) MUST BE CIRCLED

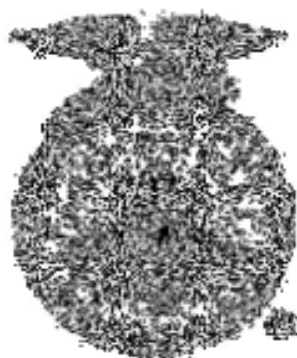
Total # of Recitation Errors
(missed, added or switched words)

Question Time:

Determination of Deductions

Number of errors x 2 =

Total Deduction:



The creed was written by E.M. Tiffany, and adopted at the 3rd National Convention of the FFA. It was revised at the 38th Convention and the 63rd Convention.

Creed Speaking LDE Presentation Rubric

100 POINTS

Participant # _____

Indicators	Very strong evidence of skill 5-4 points	Moderate evidence of skill 3-2 points	Weak evidence of skill 1-0 points	Points Earned	Weight	Total Points
Oral Communication – 30 points						
Pace	Speaks very articulately at rate that engages audience.	Speaks articulately but occasionally speaks too fast or has long unnecessary hesitations	Speaks too slow or too fast to engage audience		X 2	
Tone	Voice is upbeat, impassioned and under control	Voice is somewhat upbeat, impassioned and under control	Voice is not upbeat; lacks passion and control		X 2	
Volume	Emitted a clear, audible voice for the audience present	Emitted a somewhat clear, audible voice for the audience present	Emitted a barely audible voice for the audience present		X 2	
Non-verbal Communication – 30 points						
Eye contact	Eye contact constantly used as an effective connection Constantly looks at the entire audience (90-100 percent of the time)	Eye contact is mostly effective and consistent Mostly looks around the audience (60-80 percent of the time)	Eye contact does not always allow connection with the speaker Occasionally looks at someone or some groups (less than 50 percent of the time)		X 2	
Mannerisms and gestures	Hand motions are expressive and used to emphasize talking points No nervous habits	Sometimes exhibits nervous habits Hands are sometimes used to express or emphasize	Displays some nervous habits Hands are not used to emphasize talking points; hand motions are sometimes distracting		X 2	

Indicators	Very strong evidence of skill 5-4 points	Moderate evidence of skill 3-2 points	Weak evidence of skill 1-0 points	Points Earned	Weight	Total Points
Poise	Portrays confidence and composure through appropriate body language (stance, posture, facial expressions)	Maintains control most of the time; rarely loses composure	Lacks confidence and composure		X 2	
Question and Answer—40 points						
Response to questions	Responds with organized thoughts and concise answers	Speaks effectively and sometimes gets off topic Answers lacks organization	Response fails to answer question		X 2	
Support	Always provides details that support answers/basis of the question	Usually provides details that are supportive of the answers/basis of the question	Sometimes overlooks details that could be very beneficial to the answers/basis of the question		X 3	
Knowledge of agriculture	Answer shows knowledge of agriculture	Answer shows limited knowledge of agriculture	Answer shows no knowledge of agriculture		X 3	
<i>Gross Total Points</i>						
Time Deduction*						
Accuracy Deduction**						
NET TOTAL POINTS						
RANK						

* -1 point per second over, determined by the timekeepers

** - 2 points per word, determined by the accuracy judges